

# WIRELESS AUTHENTICATION WINDOWS XP SP3 SYSTEMS

UCC-EntNet v1.1, 031109

The following instructions and general notes are for Windows XP users.

After the setup is completed, you will need to login to the UNO-Domain only for the initial connection. XP will retain your login credentials and your system will automatically reconnect to the domain every time you connect to the UNO wireless network.

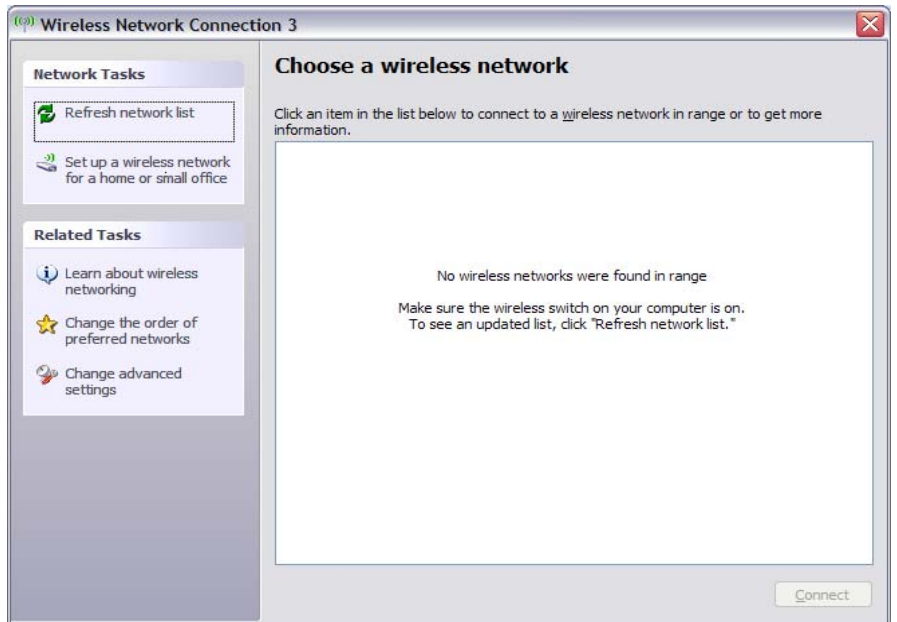
This will remain in effect as long as your UNO account is active or until your password changes at which time you will have to login with the new password.

Since your laptop will connect using your credentials, anyone borrowing your laptop will be identified as you. Please be careful since you are responsible for following all UNO policies regarding the use of the UNO network with your account.

If you have problems call the UNO Help Desk at 280-HELP (4357) for assistance.

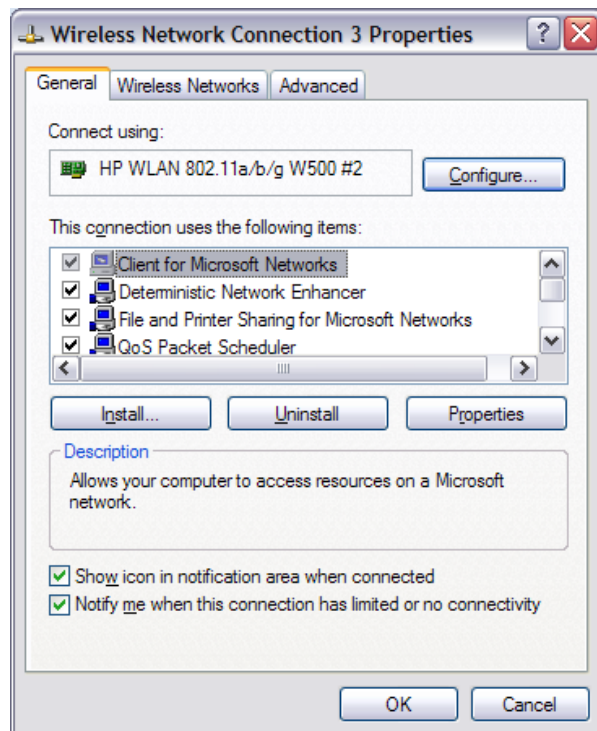
1. Click **Start** and select **Control Panel**.
2. Double-click **Network Connections**.
3. Double-click **Wireless Network Connection**.

4. Click **Change advanced settings** on the left.



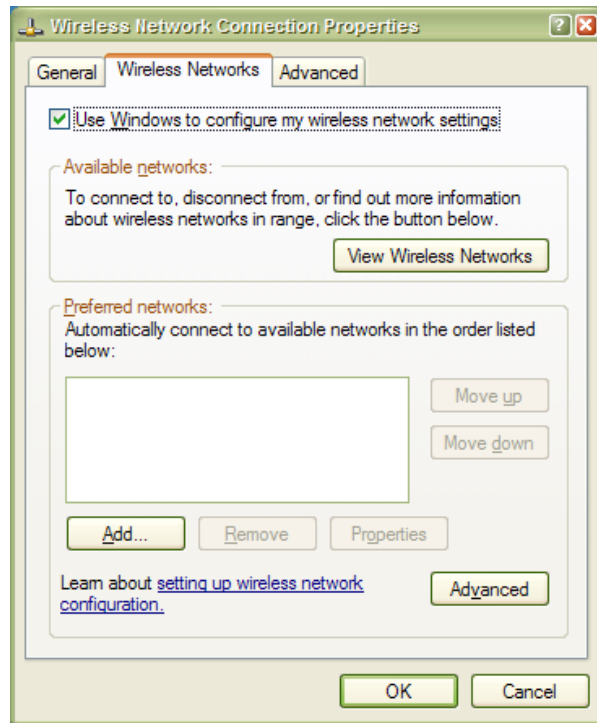
5. Click the **Wireless Networks** tab at the top of the window.

Note: If you do not see the Wireless Networks tab, you will need to enable the Wireless Zero Configuration service under: Start > All Programs > Control Panel > Administrative Tools > Services



6. Check **Use Windows to configure my wireless network settings.**

7. Click **Add.**

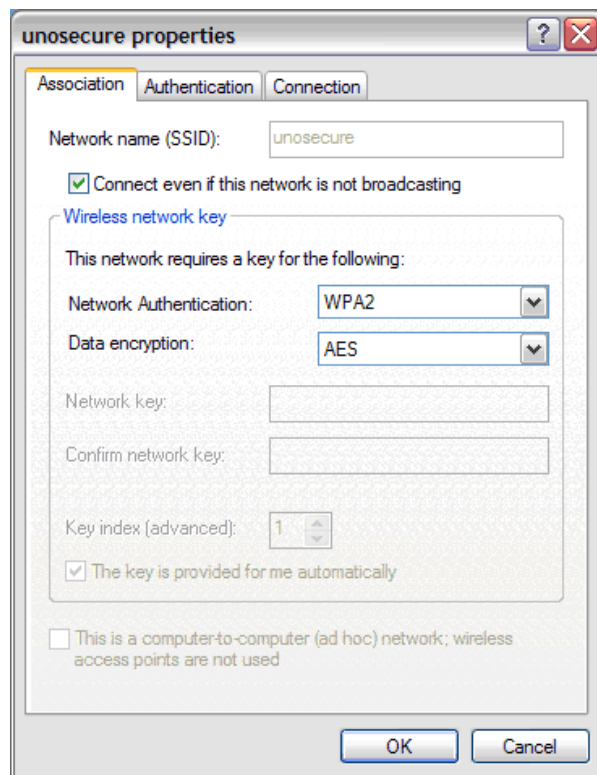


8. Network name (SSID):  
**unosecure**

9. Check **Connect even if this network is not broadcasting.**

10. Network Authentication:  
**WPA2**

Note: If WPA2 is not an option, a patch needs to be downloaded and installed to enable this option. A link to download this patch can be found below this section. If the patch has been installed, and WPA2 is still not an option, then the computer's network card cannot support WPA2, and the WPA option should be selected.



11. Data Encryption:  
For WPA2: **AES**  
For WPA: **TKIP**

12. Check **The key is provided for me automatically.**

WPA2 Patch Download Link:

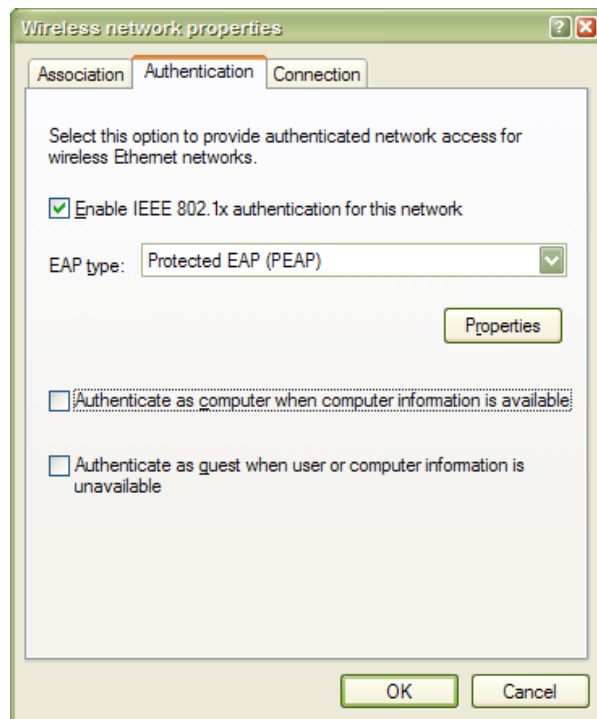
<http://www.microsoft.com/downloadS/details.aspx?FamilyID=662bb74d-e7c1-48d6-95ee-1459234f4483&displaylang=en>

13. Click the **Authentication** tab at the top of the window.

14. Check **Enable IEEE 802.1.x authentication for this network.**

15. EAP type:  
**Protected EAP (PEAP)**

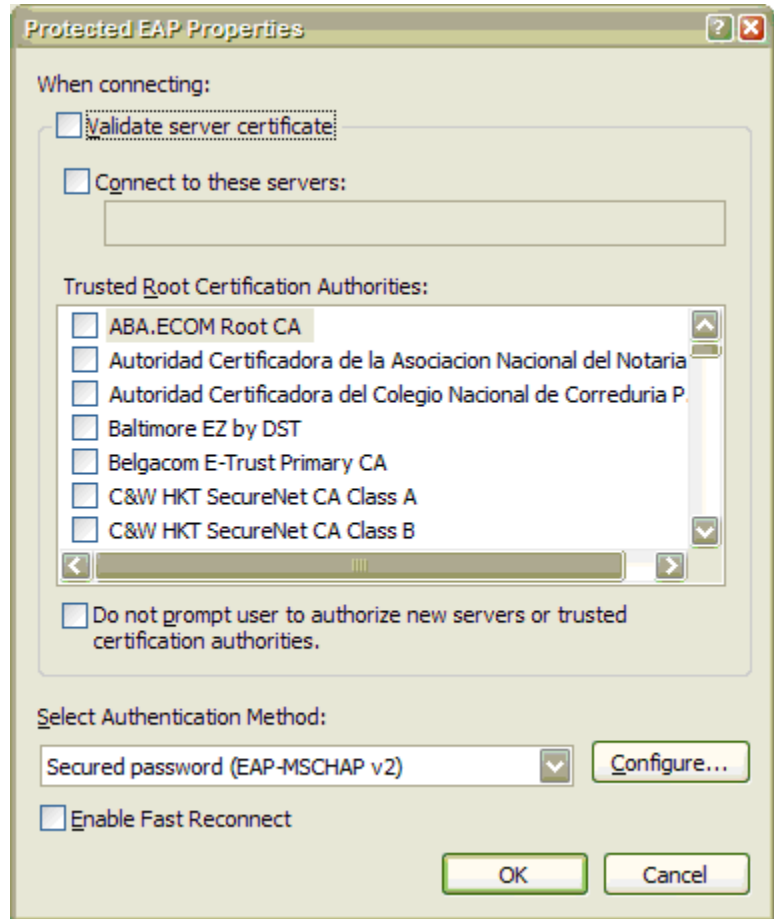
16. Click **Properties.**



17. Uncheck **Validate server certificate**.

18. Select Authentication Method:  
**Secured Password (EAP-MSCHAP v2)**

19. Click **Configure**.

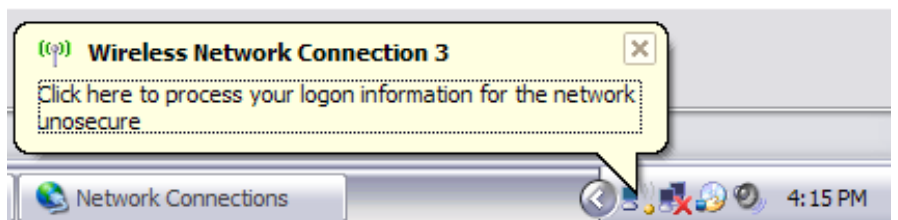


20. Uncheck **Automatically use my Windows logon name and password (and domain if any)**.



21. Click **OK** on all open windows.

22. Click the balloon when it appears.



23. Enter UNO User Name.

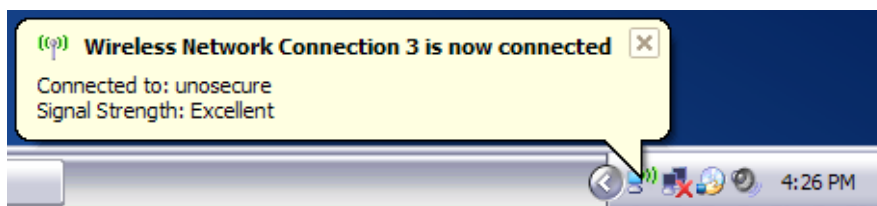
24. Enter UNO Password.

25. Logon domain:  
**UNO-DOMAIN**

26. Click **OK**.



27. Click the balloon when it appears.



The computer should now connect to the UNO Secured Wireless Network with WPA2 or WPA Encryption and 802.1x Authentication. If you have problems call the UNO Help Desk at 280-HELP (4357) for assistance.